



# GEOCAST Geopolymer Mortar

January 2018

## THE PIPE & CULVERT REPAIR CONNECTION

Corrugated Metal Pipe Rehabilitation

# Project Details

**PROJECT:**

FM 361 CIPP Storm Sewer  
Rehab

Rosenberg, Texas

**OWNER:**

Texas DOT

**DATE:**

2017

**PRODUCT:**

Geocast™ Geopolymer Mortar is a stand-alone structural mortar for rehabilitation of existing horizontal concrete pipes and steel corrugated culverts to be repaired in place with varying field conditions, shapes and sizes; and tunnels, mines, vertical shafts, sewer manholes and

water treatment plant structures.

**PROJECT FACTS:**

**CONTRACTOR:**

Layne Inliner, LLC.

**SUBCONTRACTOR:**

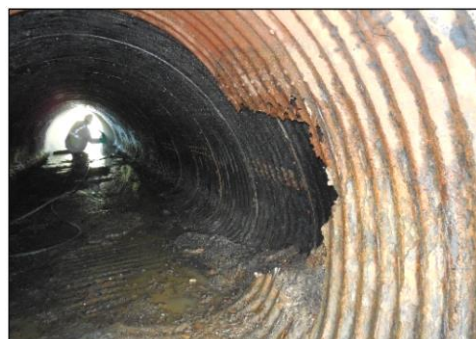
SCM, Inc.

**LOCATION:**

Fort Bend County

**PIPE TYPE:**

70' x 42" x 48" Dia. CMP



### Existing elliptical CMP Culvert

Centrifugally sprayed wet mix geopolymer mortar rehabilitation process using robotic equipment for lining horizontal concrete pipes, CMP culverts, vertical shafts and other structures.

## 30-Years of Successful Applications in USA, Mexico and Australia...

**PATENT:** No. 5,250,113 co-inventor "Dry Castable Concrete Compositions and Methods of Preparing and Casting the Same" W. R. Grace Company, New York, NY.

**The Problem** — Texas Department of Transportation officials were faced with using risky trenching to replace an existing deteriorated steel arch culvert at FM Highway 361 (40-minutes south of Houston). The culvert was refitted with round extensions that failed threatening to collapse the road stopping all

**The Solution** — Instead of using hard pounding asphalt crushing replacement methods TXDOT officials decided to use a non-destructive solution to the problem. Ideally, the Geocast™

traffic from reaching the landfill at the roads end. The drainage culvert was designated for repair by CIPP rehabilitation methods. Unfortunately, the work site

Geoloymer Mortar was there to provide a trenchless repair alternative that saved the roadway and didn't destroy the culvert or harm the natural fauna nearby preserving the

offered no entry and a very small work area on a narrow part of the road's shoulder granting restricted access to the contractor.

environment. The patented process met the engineer's criteria guaranteeing the highway would remain safe meeting TXDOT Operation policy's.



Working with Geocast™ Geopolymer Mortar

### MANUFACTURER:

Standard Cement Materials, Inc.  
Houston, Texas  
1-888-278-1337  
[www.standardcement.com](http://www.standardcement.com)